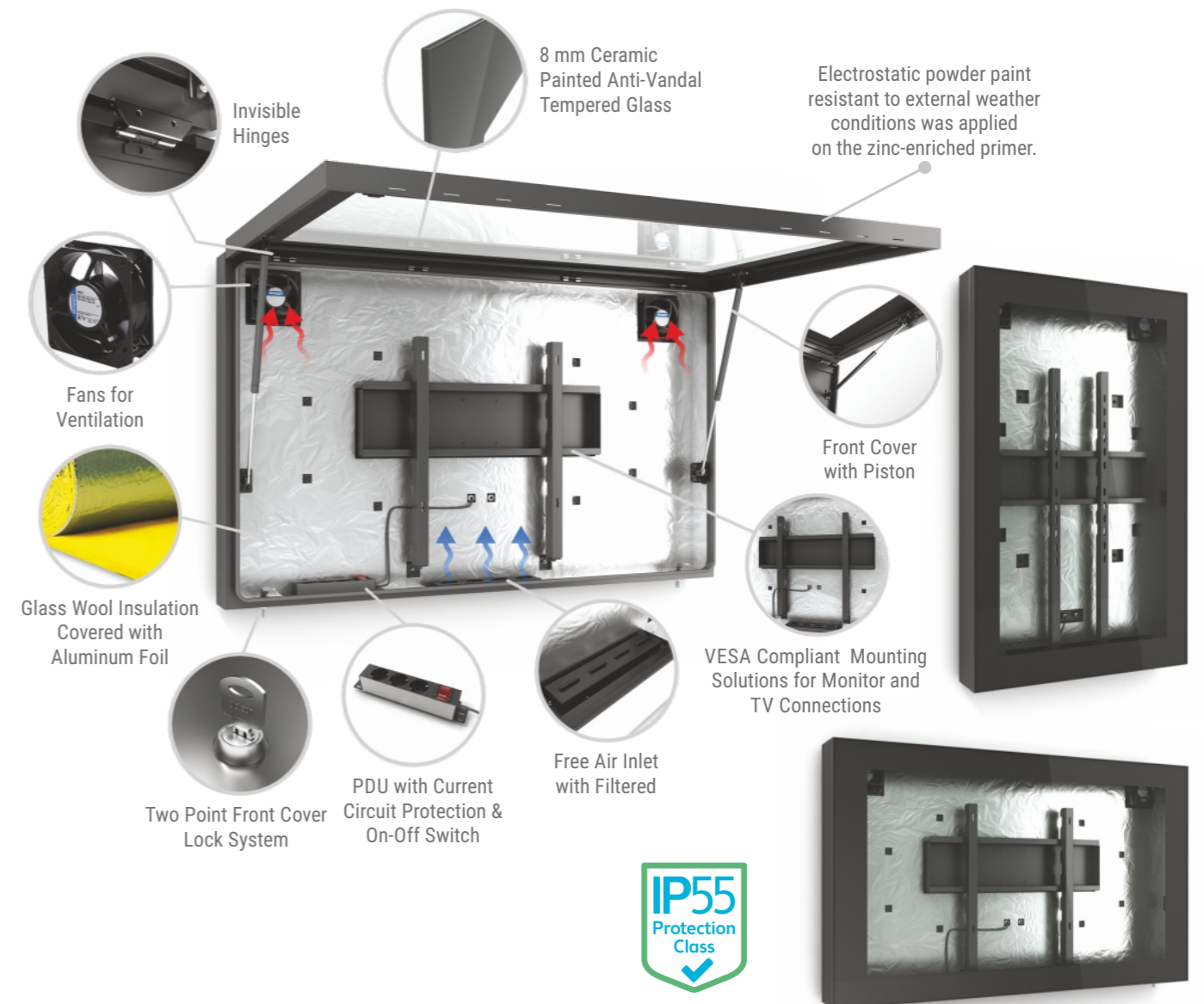


M5 SERIES

Full-Outdoor Monitor Enclosure

M5
Outdoor



Key Features

- High Quality Finishes
- Easy Access for Maintenance
- 8mm Anti-Vandal Tempered Glass
- Available for Wall & Ceiling Mounts
- Easy Monitor-TV Mounting



MONITOR		ENCLOSURE				PACKAGE	
Display (inch)	Mountable Max. Monitor Dimension	Dimension without Wall Mount (WxHxD)	Dimension with Wall Mount (WxHxD)	Weight (kg)	Viewing Area (WxH)	Dimension (WxHxD)	Weight (kg)
32"	435x740x100 mm	925x580x160 mm	925x580x203 mm	58	393x698 mm	980x640x220 mm	60
43"	570x980x100 mm	1173x722x160 mm	1173x722x203 mm	68	529x941 mm	630x1040x220 mm	70
46"	615x1060x100 mm	1244x759x160 mm	1244x759x203 mm	70	573x1018 mm	1300x810x220 mm	72
49"	645x1115x100 mm	1300x790x160 mm	1300x790x203 mm	76	604x1074 mm	705x1175x220 mm	79
50"	655x1135x100 mm	1300x790x160 mm	1300x790x203 mm	76	616x1096 mm	705x1175x220 mm	79
55"	720x1250x100 mm	1437x869x160 mm	1437x869x203 mm	87	680x1210 mm	1500x930x220 mm	90
65"	845x1470x100 mm	1654x989x160 mm	1654x989x203 mm	105	804x1428 mm	1720x1050x220 mm	110
75"	970x1690x100 mm	1876x1114x160 mm	1876x1114x203 mm	128	928x1650 mm	1950x1200x250 mm	132

* Multiple product package sizes may differ from the information written above. Please get information when you order.

Main Features

● Included ● Optional ● On Project ● Not Available

