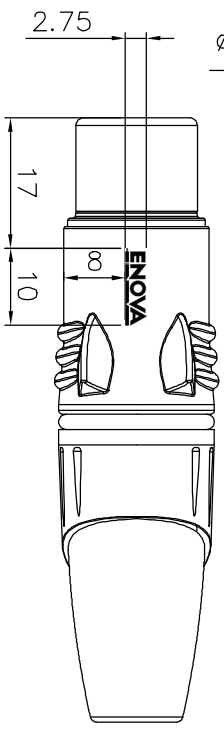
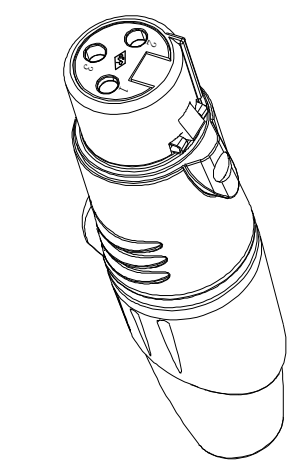
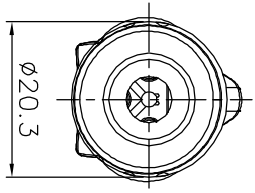
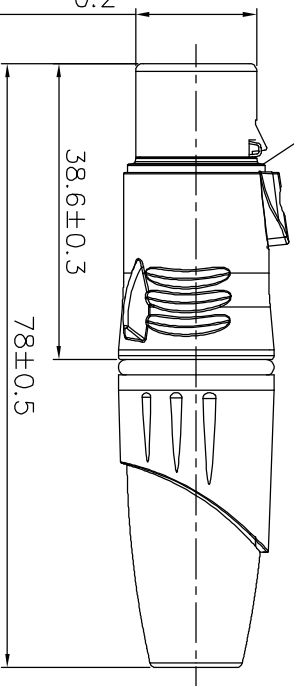
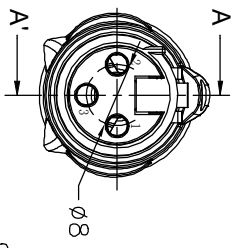
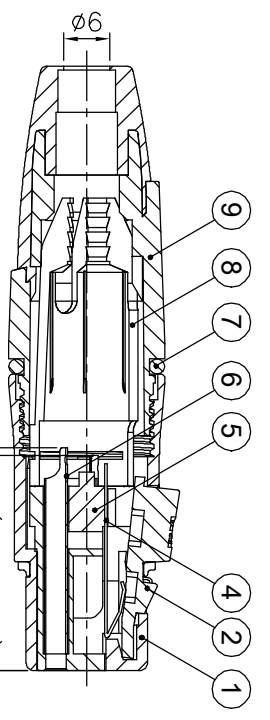
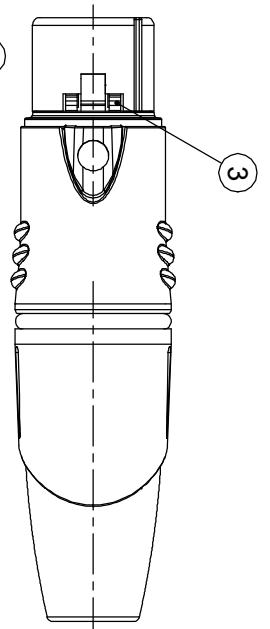


1	2	3	4	5	6	7	8
ISS	ZONE	DESCRIPTION \ PER REQUEST \ DATE					
V	OPEN	Open drawings to customers					



Notes:
 1. Remove O-ring used for cable O.D.: 3.3~4.8mm,
 Standard connector used for cable O.D.: 5.0~7mm

10	O-RING	SILICON	BLACK	1	
9	CAP+BOOT	PA6+TPR	BK+GY	1	
8	CABLE CLAMP	POM	WHITE	1	
7	O-RING	SILICON	BLACK	1	
6	FEMALE PIN	PHOSPHOR BRONZE	SILVER	3	
5	INSULATOR	PA	BLACK	1	
4	LATCH	STAINLESS STEEL	TIN	1	
3	FIXED SHEET	STAINLESS STEEL	NICKEL	1	
2	PUSH BUTTON	ZZNAl4-1	NICKEL	1	
1	DIE CAST SHELL	ZZnAl4-1	Electro coating black	1	

DIMENSIONS ARE IN MILLIMETERS		APPROVED	DATE
UNLESS OTHERWISE SPECIFIED TOLERANCES		CHECKED	DATE
ANGLES = ±5°		DRAWN	DATE
UP TO 6 = ±0.2		FILE NO.	
6-40 = ±0.4		ERP LINK:	
40-120 = ±0.6		SCALE	1/1
120-315 = ±1			
ABOVE 315 = ±1.6			

<h1>Connector Distribution GmbH</h1>		PART NO.	XL23FB	REV.	A1
		TITLE	3PIN XLR FEMALE CONNECTOR		