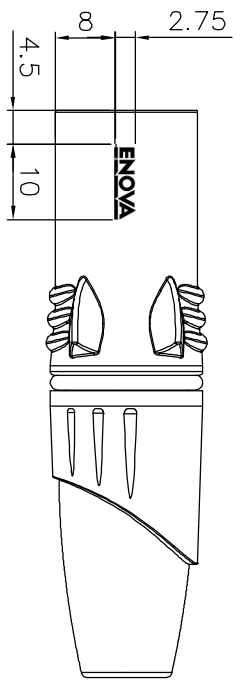
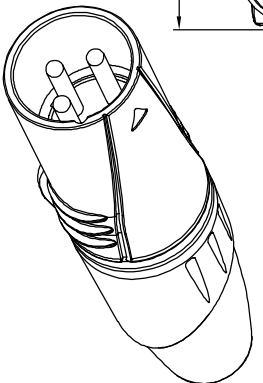
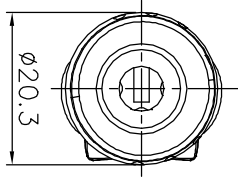
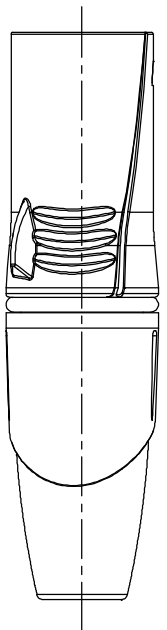
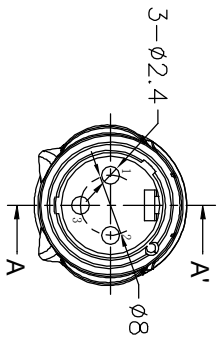
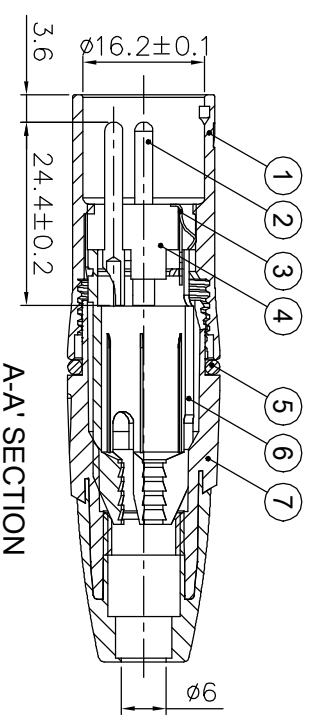
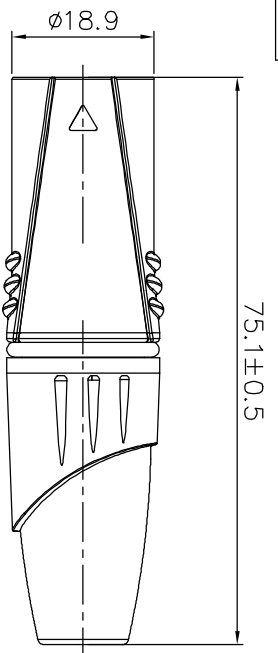


1	2	3	4	5	6	7	8
ISS ZONE		REVISIONS					
DESCRIPTION \PER REQUEST\DATE							
V	OPEN	Open drawings to customers					

Notes:  
 1. Remove O-ring used for cable O.D.: 3.3~4.8mm,  
 Standard connector used for cable O.D.: 5.0~7mm



7	CAP+BOOT	PA6+TPR	BK+GY	1	
6	CABLE CLAMP	POM	WHITE	1	
5	O-RING	SILICON	BLACK	1	
4	INSULATOR	PA	BLACK	1	
3	Terminal	H62	TIN	1	
2	PIN	H59-1	SILVER	3	
1	DIE CAST SHELL	ZZnAL4-1	Electro coating black	1	
NO.	DESCRIPTION	MATERIAL	FINISH	Q'TY	DRAWING NO.

DIMENSIONS ARE IN MILLIMETERS		APPROVED		DATE
UNLESS OTHERWISE SPECIFIED TOLERANCES		CHECKED	DATE	
ANGLES = 45°		DRAWN	DATE	
UP TO 6 = ±0.2		HAONANHU	209-8-27	
6-40 = ±0.4		FILE NO.		
40-120 = ±0.6				
120-315 = ±1				
ABOVE 315 = ±1.6				
THIRD ANGLE	SCALE	ERP LINK:		
1/1	1/1			

Connector Distribution GmbH		PART NO.	REV.
3PIN XLR MALE CONNECTOR		XL23MB	A1

1 2 3 4 5 6 7 8