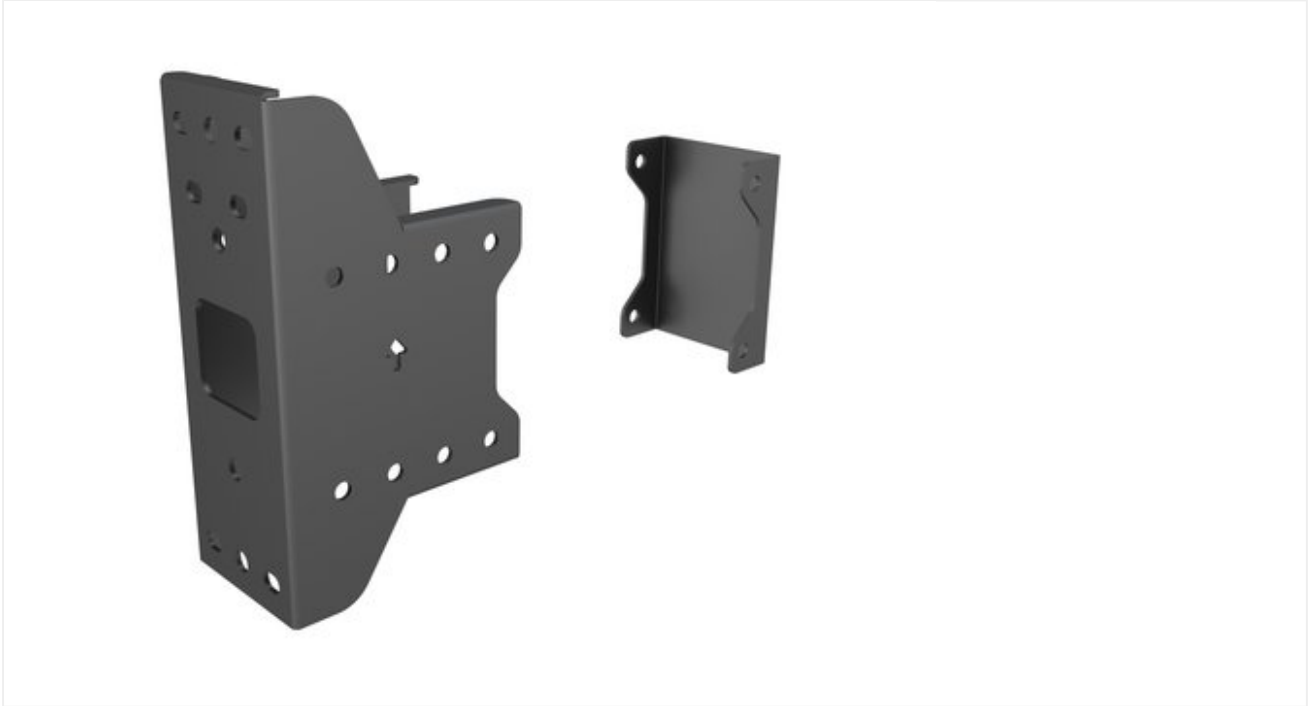


DIGITAL SIGNAGE Pro Series Parts M Pro Series - Back to back display plate from wall



M Pro Series - Back to back display plate from wall

M Pro Series – Back to back display plate from wall - Part for Pro Series, steel, mounts to wall and rail - black
[Read more...](#)

Status: In Stock

[Submit price inquiry.](#)

Quick response on email requests
 Fast deliveries
 Pan European warehousing

Description

Article no.: 7350073737345

M Pro Series – Back to back display plate from wall - Part for Pro Series, steel, mounts to wall and rail - black

SPECIFICATION

M Pro Series - Back to back display plate from wall

Article No:	7 350 073 737 345
Type:	Part for M Pro Series
Material:	Steel
Color:	Black

Surface Finish:	Powder coating
Weight:	1.0 kg
Measurements	225.2x134x85 mm
Max Load:	50 kg
Installation:	Mount to wall
Warranty:	5 years

Retail Package Specification

Package Parcels:	1 pcs
Package Measurements:	0 x 0 x 0 cm
Package Weight:	0.00 kg